

NAHKANAAMA



TECHNICAL RIDER

The requirements stated in this rider have been set for the mutual benefit of the Presenter and the Group, to achieve a successful technical and artistic presentation of the piece. If you have problems to fulfil some of our demands don't hesitate to contact us. We will find a solution!

This rider forms an integral part of the contract and any alterations or substitutions shall be done in writing please.

CONTACTS

ARTIST

Jouni Ruuth // jouni.ruuth@gmail.com // +358 40 767 7767 (ENG, FIN)

TECHNICAL DIRECTOR // LIGHTING DESIGNER

Teo Lanerva // teo.lanerva@gmail.com // +358 40 913 1388 //
Skype: teo_lanerva (FIN, ENG)

DURATION

60 minutes

TOURING PARTY

- 1 performer
- 2 technician
- 1-2 producer/director (depending of the needs of the company to bring their producer or a director, in some cases not needed).

STAGE

Theatrical conditions are required and a complete black-out must be possible. All emergency lights that are not absolutely crucial must be covered.

We use atmospheric effects and the air conditioning must be at low setting. If it's not possible we require at least one extra hazer.

DIMENSIONS

Preferred:

- Width: 10m + 4m for lights on each side = 18 from wall to wall
- Depth: 10m + 4m for lights behind = 14m
- Height: 6m of free height, 6,5m to grid / pipes

Minimum:

- Width: 8m + 1m for lights on each side = 10 from wall to wall
- Depth: 9m + 1m for lights behind = 10m
- Height: 5m of free height, 5,5m to grid / pipes

CURTAINS

- The space should be stripped of all curtains, borders and legs including the front and back curtains, except for the top border at the proscenium arch.
- If the walls are not black or some other dark shade, it might be necessary to use curtains

FLOOR

- We prefer black floor without dance mat, but if the floor is not black we need the dance mat.
- The stage surface should be stable and free from splinters, holes, and/or other obstructions

RISERS

- 2 x 2m drum riser on wheels
- sides of the risers need to be taped black if they are silver

RIGGING

- 2 x 8m black truss for par cans
- 4 x chain hoist for par trusses
- 4 x short pipe for sub hangs
- enough rope / steel for sub hangs

PROPS

During the performance we use small confetti shooter so there will be some confetti around the stage. We also spill some non-alcoholic beer.

CLEANING EQUIPMENT

- vacuum cleaner
- 2 x broom
- dustpan
- 1 x flat mop

LIGHTING REQUIREMENTS (Provided by Presenter)

All the lights to be provided by the Presenter must be in good condition, clean, tested and ready on the stage along with accessories and cables before load-in time.

The lighting set-up is easily scalable and on smaller venues we require less fixtures. It's great to have the whole set-up, but if it's not possible we'll find a solution!

- Optimal amount of dimmer channels is 96 x 2kW (27 on the floor)
 - Minimum is 75 x 2kW ch (19 on the floor) / 71 x 3kW ch (19 floor)
 - Audience light is not included in these dimmer channels or fixture count
- 7 x ETC S4 26°
- 16 x ETC S4 36°
- 4 x ETC S4 50°
- 10 x 1kW Fresnel / PC, with barndoors
- 4 x 2kW Fresnel / PC
- 4 x 2kW Profile approx. 40°
- 30 x Par 64 CP62
- 8 x ETC S4 Par
- 10 x 1kW asymmetrical flood / cyc (depends on the size of the venue)
- 16 x **black** floor mount / plate for profiles, fresnels and pars
- 2 x 1,5m **black** (tripod) stand for the 2kW Fresnel / PC
- Ropes and pipes to sub hang the fixtures
- Filter frames, clamps and safety cables for all fixtures
- Smoke machine e.g. ZR-44 or Look solutions Viper (dmx-controllable)
- Hazer e.g. Look-Solutions Unique 2.1 (dmx-controllable)
 - If air moves a lot on the stage we need minimum two (2) hazers.
- 1 x DMX controllable **black** ventilator to distribute the haze

- Sufficient amount of power extension and dmx cables
- Power adapters for our lights with schuko connectors if the performance takes place in a country that uses other plug type than schuko.
- New LEE Filters: L108, L201, L202, L256, L257, L501, L711, L773
- Spare bulbs for all fixtures, spare fixtures, spare fluids, spare filters etc.
- Black cable ties
- Tapes: black gaffer tape, black PVC tape, black aluminum tape
- UPS for our console

ATMOSPHERICS

Nahkanaama likes haze and smoke! Optimal setup would be:

- Look-Solutions Unique 2.1 to create some structure where needed
- Look-Solutions Viper for special effect
- MDG Atmosphere always on for thin haze

Although it's nice to have it all, we understand that every theatre doesn't have one of each so we can also manage with only one hazer type.

Preferably Unique 2.1. To achieve the right look we need a some structure on the haze so smallest particle hazer like MDG Atmosphere might not be the best choice to be the only machine.

All smoke and haze fluids need to be non-toxic, high quality fluids designed to be used with the specific machine. Only MDG, Pea Soup, Look-Solutions, Smoke Factory, Martin and Jem machines are accepted.

AUDIENCE LIGHTING

All audience lights needs to be controlled from our lighting console.

FOH

150 x 70 cm of clean table space for our lighting console and sound laptop.

- From the table there must be clear view to the whole stage.
- 230V AC power with European two-pin schuko plug

LIGHTING GEAR (Provided by the Group)

- Lighting console: MA2 OnPC CommandWing with 2 x 5pin dmx out
 - If you have MA2, please notify us so we don't bring ours
- 15 x 120W halogen flood light

DOCUMENTS

See attached generic plot for idea of the positioning. Note that these positions or fixture counts are not final. Please deliver a floorplan (PDF / DWG / WYG / SketchUp) of the venue and pictures of the stage back and side walls without curtains at least six weeks prior to presentation so our LD can draw the adapted lighting plot. You can find high resolution pdf versions in the lighting docs folder included in the zip file.





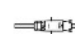


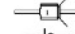




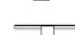

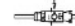

NAHKANAAMA

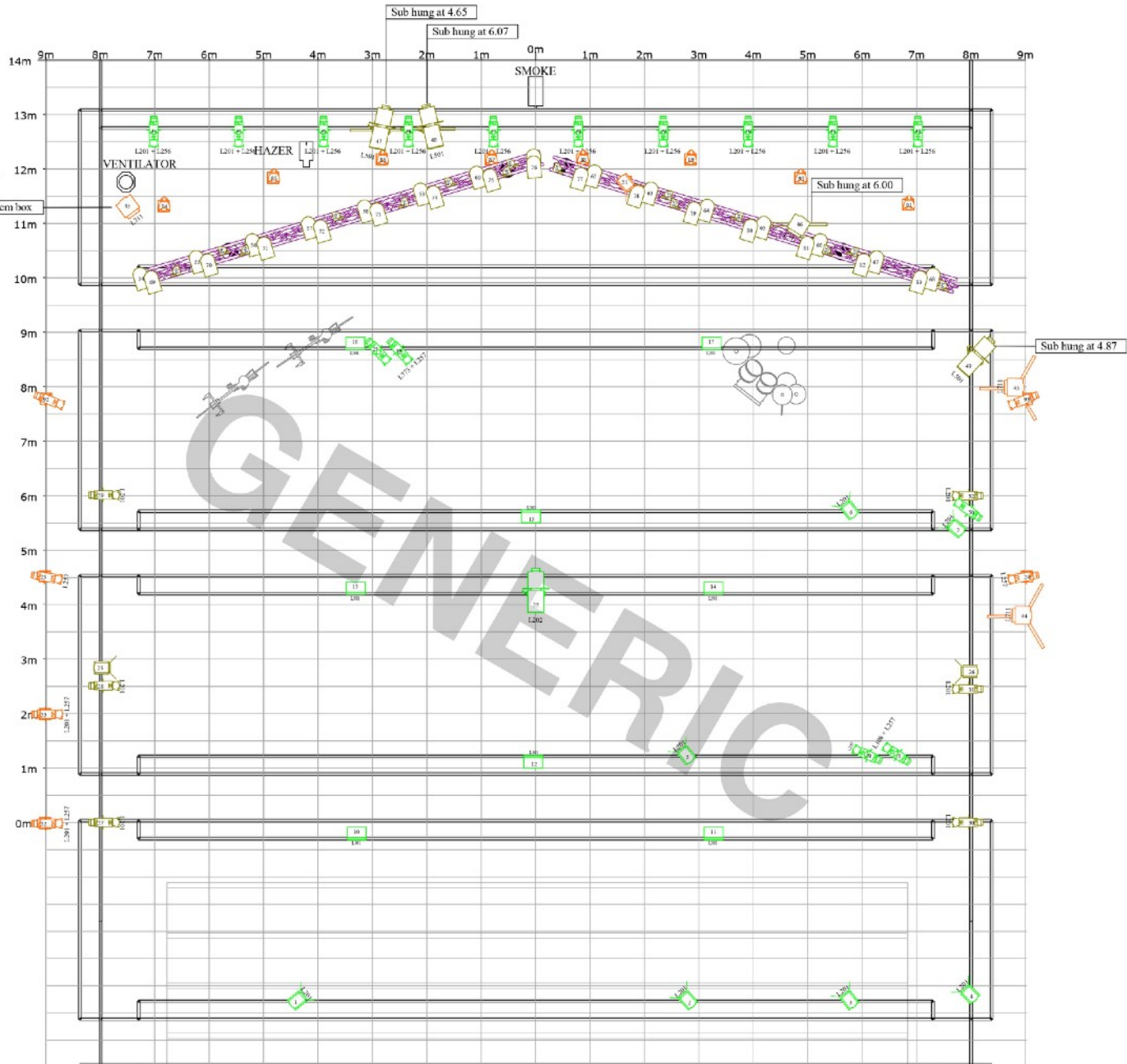
GENERIC

LIGHT PLOT v1.00

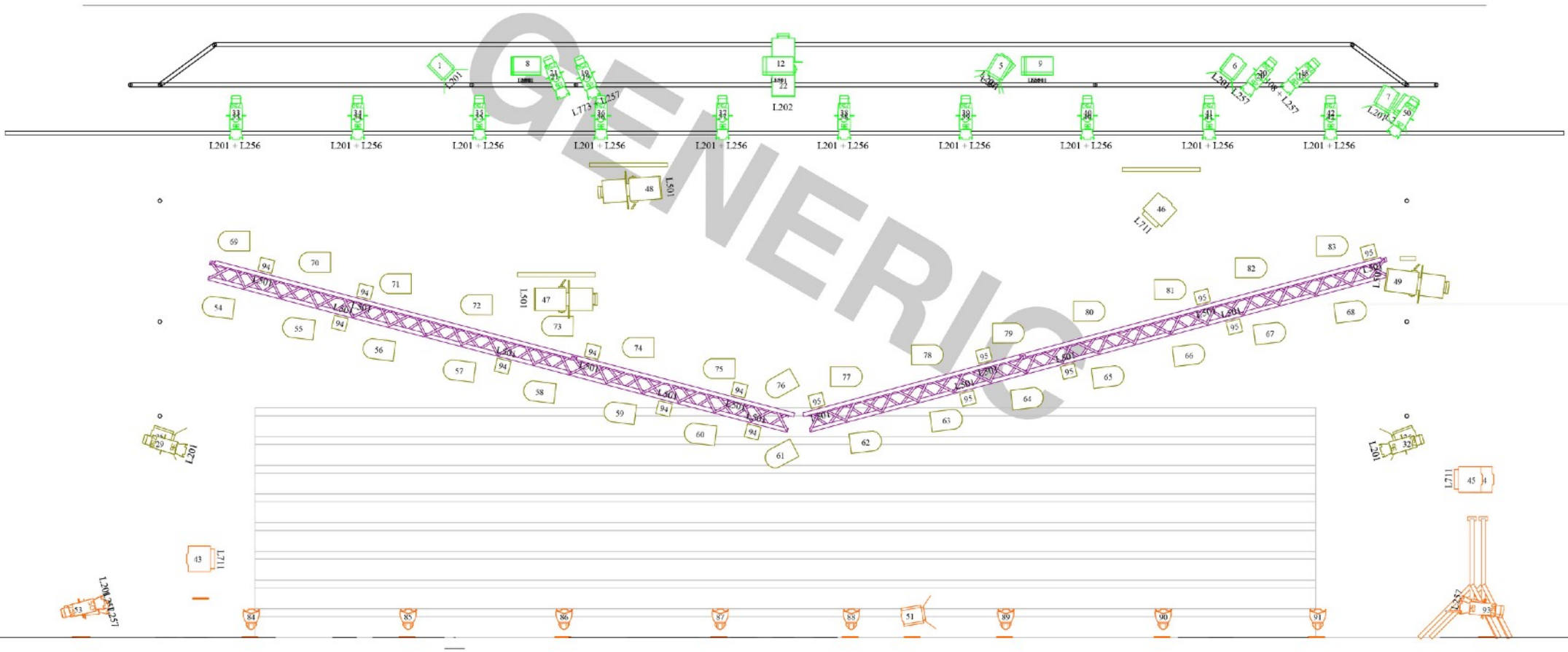
SCALE 1:75 (A3)

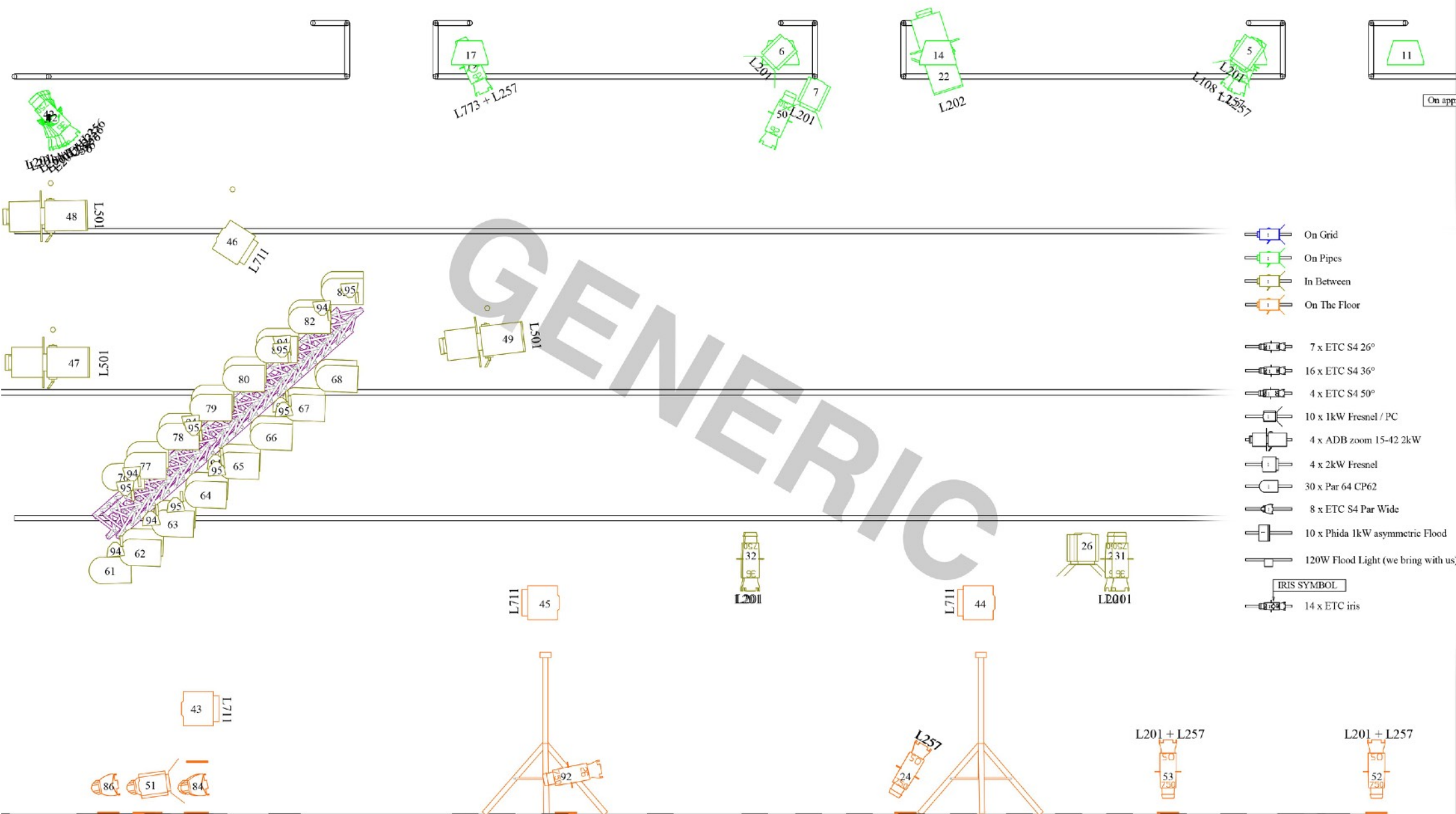
Grid: 1 x 1m

-  On Grid
-  On Pipes
-  In Between
-  On The Floor
-  7 x ETC S4 26°
-  16 x ETC S4 36°
-  4 x ETC S4 50°
-  10 x 1kW Fresnel / PC
-  4 x ADB zoom 15-42 2kW
-  4 x 2kW Fresnel
-  30 x Par 64 CP62
-  8 x ETC S4 Par Wide
-  10 x Phida 1kW asymmetric Flood
-  120W Flood Light (we bring with us)
-  IRIS SYMBOL
-  14 x ETC iris



FRONT VIEW:





TRUSS THINGIE (TO MAKE THE PAR RIG LOOK NICE AND SYMMETRICAL IT MIGHT BE NECESSARY DO SOMETHING LIKE THIS)



CH	patch	purpose	CH	patch	purpose	CH	patch	purpose
1		front	35		Par back ETC 3	69		Par 2 - 1
2		front	36		Par back ETC 4	70		Par 2 - 2
3		front	37		Par back ETC 5	71		Par 2 - 3
4		front	38		Par back ETC 6	72		Par 2 - 4
5		front	39		Par back ETC 7	73		Par 2 - 5
6		front	40		Par back ETC 8	74		Par 2 - 6
7		front	41		Par back ETC 9	75		Par 2 - 7
8		flood 1	42		Par back ETC 10	76		Par 2 - 8
9		flood 2	43		Elephant Back	77		Par 2 - 9
10		flood 3	44		Elephant R 1	78		Par 2 - 10
11		flood 4	45		Elephant R 2	79		Par 2 - 11
12		flood 5	46		Elephant Top	80		Par 2 - 12
13		flood 6	47		Bike Beam 1	81		Par 2 - 13
14		flood 7	48		Bike Beam 2	82		Par 2 - 14
15		flood 8	49		Bike Beam 3	83		Par 2 - 15
16		flood 9 i	50		Intermezzo Front	84		Par Floor 1
17		flood 10	51		Intermezzo Back	85		Par Floor 2
18		Guitar front	52		Masokist L 1	86		Par Floor 3
19		Guitar back	53		Masokist L 2	87		Par Floor 4
20		Drum front	54		Par 1 - 1	88		Par Floor 5
21		Drum Back	55		Par 1 - 2	89		Par Floor 6
22		Juggling top	56		Par 1 - 3	90		Par Floor 7
23		Juggling L	57		Par 1 - 4	91		Par Floor 8
24		Juggling R	58		Par 1 - 5	92		Drum side L
25		Applause L	59		Par 1 - 6	93		Drum side R
26		Applause R	60		Par 1 - 7	94		Truss Flood L
27		Shaker L 1	61		Par 1 - 8	95		Truss Flood R
28		Shaker L 2	62		Par 1 - 9	96		
29		Shaker L 3	63		Par 1 - 10	97		
30		Shaker R 1	64		Par 1 - 11	98		
31		Shaker R 2	65		Par 1 - 12	1001		smoke
32		Shaker R 3	66		Par 1 - 13	1002		haze
33		Par Back ETC 1	67		Par 1 - 14	1003		external fan 1
34		Par Back ETC 2	68		Par 1 - 15	1004		external fan 2

NAHKANAAMA

COLOR COUNT v1.00

BY FIXTURE

COLOR	COUNT	SIZE
L108 + L257	1	ETC S4
L201	6	ETC S4
L201	7	1kW Fresnel
L201 + L256	10	ETC S4
L201 + L257	2	ETC S4
L202	1	2kW Profile
L257	2	ETC S4
L501	10	1kW Flood
L501	3	2kW Profile
L711	4	2kW Fresnel
L773 + L257	1	ETC S4

BY COLOR

COLOR	COUNT	SIZE
L108	1	ETC S4
L201	18	ETC S4
L201	7	1kW Fresnel
L202	1	2kW Profile
L256	10	ETC S4
L257	6	ETC S4
L501	10	1kW Flood
L501	3	2kW Profile
L711	4	2kW Fresnel
L773	1	ETC S4

SOUND GEAR (Provided by the Group)

- Laptop
- Sound card
- Midi cable

The music and other sound for the show will run from laptop and sound card with XLR outputs provided by the Group. Sound and lighting consoles should be close by as we need to connect them with a midi cable.

SOUND REQUIREMENTS (Provided by Presenter)

Professional quality mixing console (Digico, Midas, Yamaha, etc.) Digital mixers with scene memory and midi recall preferred. A professional quality sound system, with full range speakers and separate sub-bass speakers. All necessary fills and clusters (with adjustable delay and EQ) for good coverage for the audience area. Quality manufactures preferred: D & B, EAW, EV, L'ACOUSTICS, MARTIN, MEYER, NEXO, etc. The system must be free of hums and noises and in good working condition at load-in time.

In addition to the main PA we'll need 2-6 additional speakers for reverb playback ("surround") to add a sense of space to the venue. The speakers should be rigged high to the sides and in the back of the audience.

In addition to the Main PA and reverb speakers we will need one high quality wedge and enough monitors for even coverage of the entire stage.

MICS

- Drum microphones (see input list) **there is no space for mic stands on the riser, only mics with clips please!**
- Shotguns or PZM's for reinforcing the voices of performers, only necessary in very large spaces

WIRELESS

- 2 x Lavalier microphones (WR1 for nylon string guitar & WR 2 for an effect kick drum)
- 1 x Wireless transmitter for electric guitar with cable, the Group can provide a suitable cable for Sennheiser ew 100 bodypacks if needed

OTHER

- In addition to the input list Wireless 1 (Nylon guitar), Wireless 3 (electric guitar), Kick drum trigger and 1 post fader aux will be sent to Ableton for processing before returning to the mixing table. All interface connectors are XLR. The kick drum trigger will need an analog xlr connection from stage to foh to avoid latency with digital desks.
- Sufficient amount of cables to connect all this.

INPUT LIST

CH	Input	Mic / Connector	Insert	FX	Output
1	Ableton Main L	XLR			Main PA L + Stage Foldback
2	Ableton Main R	XLR			Main PA R + Stage Foldback
3	Ableton Surr L	XLR			Surround L, post fader aux
4	Ableton Surr R	XLR			Surround R, post fader aux
5	Ableton Gtr	XLR			Main PA + Wedge
6	Ableton Vox FX	XLR			Main PA
7	Vox	OM7 / E935	Comp	Plate Rev	Main PA + Wedge + aux send to Ableton
	DRUMS				
8	Kick Drum	Beta 91A	Gate & Comp		Drumbus
9	Kick Trigger	XLR (Analog line to prevent latency)			Drumbus + Wedge
10	Snare Top	M80 / SM57	Gate & Comp	Plate Rev	Drumbus
11	Rack Tom 1	D4 / E904	Gate & Comp	Plate Rev	Drumbus
12	Rack Tom 2	D4 / E904	Gate & Comp	Plate Rev	Drumbus
13	Floor Tom	D4 / E904	Gate & Comp	Plate Rev	Drumbus
14	Underhead L	SDC			Drumbus
15	Underhead R	SDC			Drumbus
16	Effect Drum	Wireless Lavalier			Send to Ableton

BACKLINE (Provided by the Group)

- Cymbals and kick pedal
- Semi-acoustic guitar
- Electric guitar
- Effect Drum

BACKLINE (Provided by Presenter)

DRUMS

- 1 x Kick 22x14
- 1 x Rack tom 12x8
- 1 x Rack tom 10x7
- 1 x Floor tom 14x12
- 1 x Snare 14x6

Accepted color of drums:

- black
- other dark shade
- wood

STANDS

- 4 x Cymbal stand with boom, double braced (heavy weight, example DW 5700, CS-865)
- 1 x snare stand
- 2 x tom holders for rack toms or tom stand/stands
- 3 x floor tom leg set
- 1 x hihat stand (two or three legged) with clutch
- 1 x drum throne
- 1 x carpet 2mx2m, black color

CREW & PROPOSED SETTING SCHEDULE

The need of crew and the setting schedule are subject to local conditions. If your venue's circumstances require more time and/or personnel due to e.g. local union regulations, these numbers can be adjusted.

The set-up is done the day before the presentation. If the set-up has to happen on the same day as the performance, the pre-rigging of lights and much larger crew is required. In any case the space must be cleared of all curtains and the dance mats be in place and taped before the load-in time. The final set-up schedule with total crew needed must be confirmed with the technical director of the group at least four weeks prior to the presentation.

The biggest part of the set-up is the lighting and there is less work with stage and sound so assuming that technicians are able to work also beyond their main field of expertise (e.g. lighting techs can do some stage tech work), a reasonable crew is:

FIRST SET-UP DAY:

- 3 x lighting technician
 - 1 of them must have basic rigging skills
- 1 x sound technician

FIRST SHOW DAY:

- 2 x lighting technician
- 1 x sound technician

THE REST OF SHOW DAYS:

- 1 x lighting technician
- 1 x sound technician

The local crew should be familiar with the venue and the house electricity feeds, dimmers, sound system, fly system etc. The crew must be sober and free from other duties during the set-up times and the presentation. At least one technician speaking fluent english is required.

EXAMPLE OF PRE-PRODUCTION SCHEDULE:

6 WEEKS BEFORE THE PRESENTATION:

- The Presenter sends following documents to the technical director of the Group:
 - Complete listing of venues technical equipment
 - Floorplan (PDF / DWG / WYG / SketchUp) of the venue with pipes and bridges (top, front, side)
 - Well lit pictures of the stage without curtains where the back wall and the sidewalls are visible
 - Proposed schedule and crew
 - Contact details for the technical director of the venue

5 WEEKS BEFORE THE PRESENTATION:

- The technical director of the group will send to the technical director of the venue:
 - Adapted lighting plot for the venue
 - Possible special requirements for the venue
 - Confirm or propose changes to schedule and crew
 - Suggestions for the times for Skype meeting

4 WEEKS BEFORE THE PRESENTATION:

- The technical director of the venue has studied the documents carefully and the Skype meeting will take place.
- Schedule, crew and technical requirements will be finalised and the contract signed

EXAMPLE OF A SET-UP SCHEDULE:

BEFORE THE SET-UP DAY:

- Clearing the stage of curtains
- Taping the dance mats (if required)
- Testing the fixtures and moving them from storage to the stage
- Collecting all necessary cables and accessories
- Cutting the filters
- Cleaning the stage, bridges and pipes etc.
- Printing the plots

IF YOU FACE ANY PROBLEMS WITH THE THINGS MENTIONED ABOVE PLEASE CALL THE TECHNICAL MANAGER SO WE CAN SOLVE THE PROBLEMS IN ADVANCE. THE SET-UP SCHEDULE IS REALLY TIGHT AND THIS WAY WE WON'T NEED TO WORK OVERTIME!

SET-UP DAY:

- 10.00 - 13.00 Rigging lights
- 13.00 - 14.00 Lunch
- 14.00 - 18.00 Rigging the lights / sound set-up
- 18.00 - 20.00 Focusing lights

FIRST SHOW DAY:

- 09.00 - 13.00 Focusing lights
- 13.00 - 14.00 Lunch / Sound check
- 14.00 - 16.00 Sound check / Programming the lights
- 16.00 - 17.00 Spacing / Rehearsals
- 17.00 - 17.45 Corrections / final stage set-up / cleaning the stage
- 17.45 - 18.00 Cleaning the stage with moist mop (not wet)
- 18:00 - 18:55 Preparations for the show
- 18.55 - 19.00 Entering of public
- 19.00 - 20.00 SHOWTIME
- 20.00 - 22.00 Cleaning / Strike down (if it's the last show)

SECOND SHOW DAY:

- 16.00 - 18.00 Rehearsals
- 18.00 - 18:55 Preparations for the show
- 18.55 - 19.00 Entering of public
- 19.00 - 20.00 SHOWTIME
- 20.00 - 22.00 Cleaning / Strike down (if it's the last show)

ARTIST RIDER

ACCOMMODATION

- Accommodation for 3-5 people on the days of set-up and performance
- 5 single rooms with own toilet and shower in a hotel
- with breakfast included
- free wireless Internet access
- listing of restaurants, supermarkets, convenience stores within walking distance

TRANSPORTATION

Most of the stuff we bring by car, but in some occasions we might need to fly with some of the gear like one over weight case that are too big to move around using public transportation. We can take a taxi from the airport, but it always makes things easier if you can arrange a car to pick us up. The dimensions are 80.2 x 52 x 31.6 cm. In addition to this the group will have their personal luggage.

DRESSING ROOMS

The presenter agrees to provide the following:

1 DRESSING ROOM NEAR THE STAGE WITH:

- resting places for artists (sofas, mattresses etc.)
- showers, WC, running hot and warm water
- towels, soap
- washing machine, dryer,
- 10 x clothe hanger + clothes rack
- iron, iron board
- well lit
- tables
- chairs and a mirror
- power sockets
- garbage bin
- first aid pack, ice packs
- lockable or guarded

The Presenter is responsible for all valuables kept at the premises (stage, auditorium, FOH and dressing rooms), including the groups belongings and equipment.

CATERING

DIETARY RESTRICTIONS:

- Jouni: No allergies
- Sami: Vegan
- Teo: No kiwi

Sometimes also with us:

- Rauli (Director): No allergies

CATERING FOR SHOW AND SET-UP DAYS (READY AT LOAD-IN TIME):

- bottles of still and sparkling beverages
- 100% fruit juice
- tea and coffee with milk and sugar
- Fresh fruits
- salty snacks
 - pistaches, chips
- chocolate
- variety of freshly made sandwiches (SEE FOR DIETARY RESTRICTIONS ABOVE)
- natural yoghurt
- water bottles
- 6-pack of beer (cans)
- single malt whiskey
- organic and local is great bonus!

PER DIEMS OR MEALS:

- breakfast and 2 hot meals per day at the time specified by the group
- SEE FOR DIETARY RESTRICTIONS ABOVE
- one meal consists of starter, main dish, dessert, coffee, drinks
- listing of restaurants, supermarkets, convenience stores within walking distance